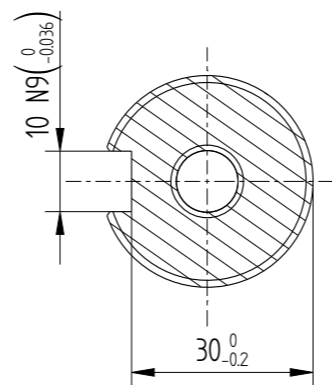
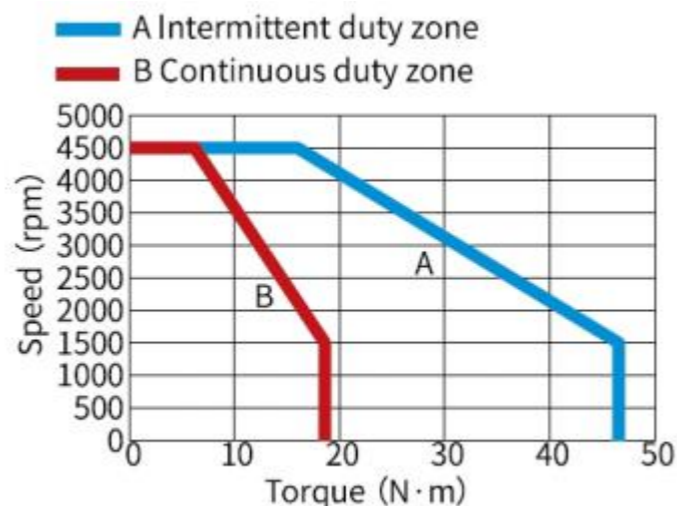
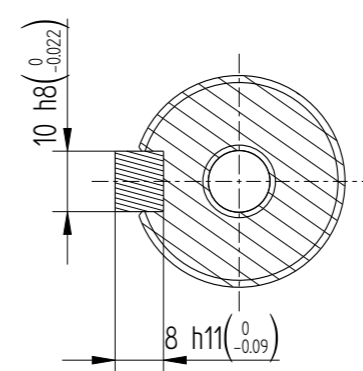


Basic function parameters	
Rated power kW	2.9
Rated voltage V	220
Rated current A	18
Peak current at rated speed A	52.5
Rated torque Nm	18.6
Peak torque at rated speed Nm	46.5
Rated speed rpm	1500
Max speed rpm	4500
Rotor inertia $\text{kg} \cdot \text{cm}^2$	52.35±10%
Encoder resolution	23bit
insulation class	F(155)
Protection level	IP67
Static torque of brake Nm	≥50
Brake power supply V	DC24±10%
Brake backlash°	≤1
duty cycle	S1
Radial load N	≤1470
Axial load N	≤490

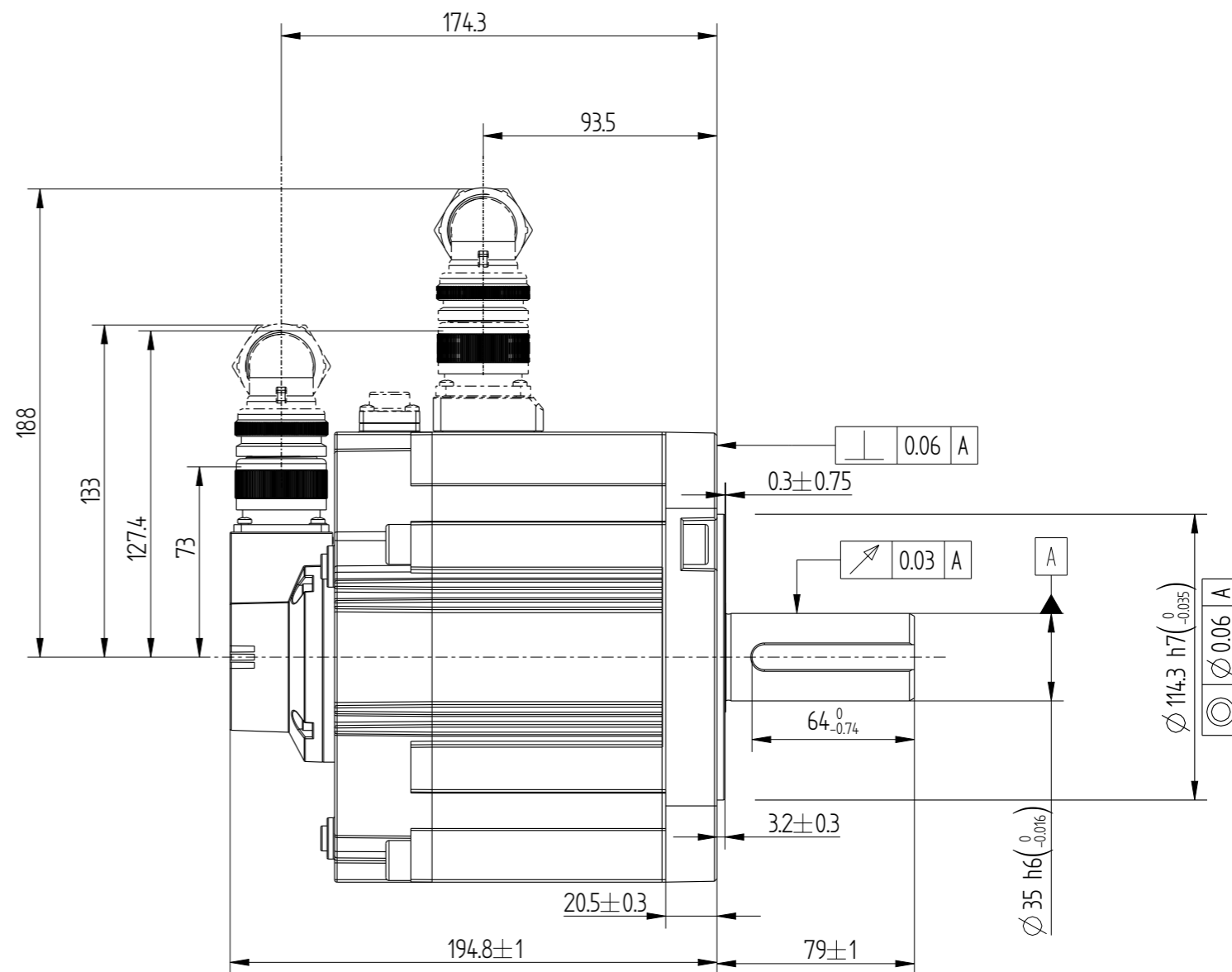
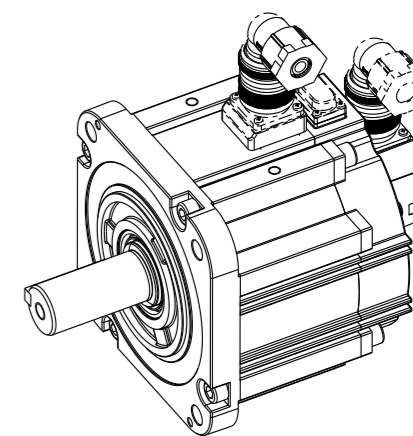
Technical drawing of the front view of a motor. The drawing shows a square base with rounded corners, a central circular shaft, and a mounting bracket on top. Dimensions include a square base of 180±0.3, a central shaft diameter of 20, and four mounting holes of diameter 13.5. The drawing is labeled with '2-M6', '4-Ø13.5EQS', '4-R30.5', and 'M12 25'.




Dimension of shaft end



Dimension of shaft end with key

01118013-WX

Mark


INOVANCE

MS1H3-29C15CB-A334R-INT